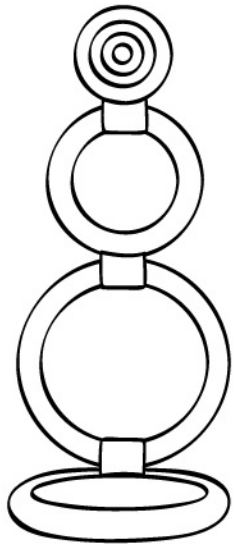


User Manual

Foldable True 1.3M Web Camera



G-CUBE³
be yourself... inspire others

introduction

A group of young female technicians got together and decided it was time for ladies to be able to express themselves with the hardware they used. G-Cube is specially designed by women for women. Our products are not only stylish, but are also functional and meet the needs of women.

The computer peripheral market has traditionally offered products that leave consumers with little choice in style and color. G-Cube has revolutionized the market by offering a refreshing line of computer peripherals that are sleek, modern and colorful.

G-Cube is designed with YOU In Mind. G-Cube wants you to Express Who You Are at home, at school, at work, the local coffee shop, the PTA or at your next national sales meeting.

G-Cube wants you to Be Yourself....and....Inspire Others!

Note:

1. For Window 2000, please install IM Magician Software (enclosed in CD) before using the camera.
2. To preview your image in Window Vista, simply click "VmCAP" after launching the enclosed CD. The icon will automatically be copied to your screen. Double click on the icon to preview.
3. The Camera is plug and play on Window XP, Vista, or above. No Driver is required. For additional functions on camera, please install IM Magician Software first.

Software Installation

Step 1: Please uninstall any previously installed web camera driver before installing G-CUBE software.

Step 2: Insert the enclosed driver (CD) to start installation. Then you'll see "Figure B" pop up.



Figure B

■ 3
■ ■ Getting Started

Step 3: Click "IM Magician Software" to start the installation, then follow the on-screen instructions to accomplish the installation.

Step 4: When the installation is completed, the icon "IM Magician" will appear on the desktop, then you have successfully installed the driver. Double click the icon "IM Magician" or go to Start—Programs—G-CUBE IM Magician—IM Magician to launch the software. Then you will see the main menu appear as "Figure C".

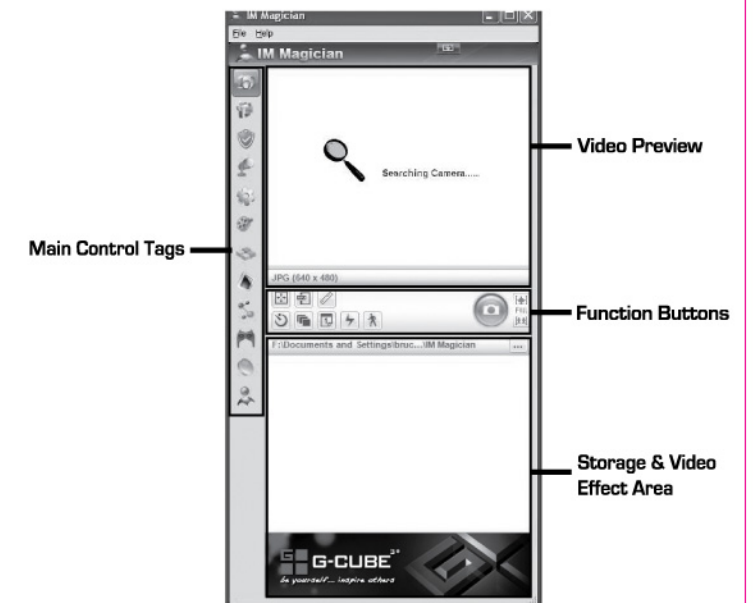
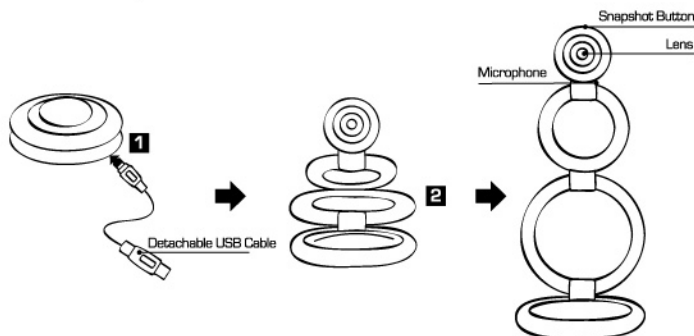


Figure C

■ 4
■ ■ Getting Started

Know your Product



1 Detachable Design

The USB cable can be separated from the camera, this design will satisfy your travel needs.

2 Stackable structure

Easily fold the camera or unfold, the special structure saves space for your journey.

Reminder: When using the camera, don't forcibly rotate the lens. This will damage the internal wire and make your camera unavailable.

Getting Started

Set-up your camera

A. Insert mini USB connector into the camera.



B. Plug the other side of USB connector into the USB port on your desktop or notebook.



C. Then your computer will automatically find this new hardware. Double click "My computer", and then "Figure A" will pop up. Double click the camera icon, you should see yourself in the screen. (In Windows XP)

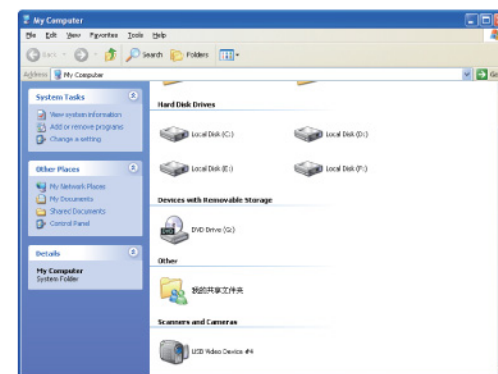


Figure A

D. Now, you can use the camera to start video with your friends and family all over the world by "Skype, Yahoo! AOL, or MSN".

■ 2
■ ■ Getting Started

To remove the software:

1. Go to START, then select PROGRAMS >> G-CUBE IM Magician>> Uninstall IM Magician.
2. Go to START, then select Control Panel >> Add or Remove Programs, look for "IM Magician", click on "Remove".

** Please access the help system to learn more about this IM Magician software. For more completed instructions on how to set up or configure different settings in your webcam, please refer to the complete user's manual in your CD.

Your Product Support

For Technical Support, Please visit our website at support.gggcube.com or email to support@gggcube.com

For Warranty Information, please visit our website at warranty.gggcube.com

For Product Registration, please visit our website at register.gggcube.com.

*Features and specifications of all G-CUBE products are subject to change without notification.

THIS DEVICE COMPLIES WITH PART 15 OF THE FCC RULES. OPERATION IS SUBJECT TO THE FOLLOWING TWO CONDITIONS:
(1) THIS DEVICE MAY NOT CAUSE HARMFUL INTERFERENCE AND
(2) THIS DEVICE MUST ACCEPT ANY INTERFERENCE RECEIVED, INCLUDING INTERFERENCE THAT MAY CAUSE UNDESIRABLE OPERATION.

■ 5
■ ■ Your Product Support

Federal Communications Commission Requirements

The equipment has been tested and found to comply with the limits for Class B Digital Device, pursuant to part 15 of the FCC Rules. These limits are designed to provide reasonable protection against harmful interference in a residential installation. This equipment generates uses and can radiate radio frequency energy and, if not installed and used in accordance with the instruction, may cause harmful interference to radio communication. However, there is no guarantee that interference will not occur in a particular installation. If this equipment does cause harmful interference to radio or television reception, which can be determined by turning the equipment off and on, the user is encouraged to try to correct the interference by one or more of the following measures:

- Reorient or relocate the receiving antenna.
- Increase the separation between the equipment and receiver.
- Connect the equipment into an outlet on a circuit different from that to which the receiver is connected.
- Consult the dealer or an experienced radio/TV technician for help.

THE CHANGES OR MODIFICATIONS NOT EXPRESSLY APPROVED BY THE PARTY RESPONSIBLE FOR COMPLIANCE COULD VOID THE USER'S AUTHORITY TO OPERATE THE EQUIPMENT.

This device complies with Part 15 of the FCC Rules. Operation is subject to the following two conditions:

- (1) This device may not cause harmful interference, and receiver
- (2) This device must accept any interference received, including interference that may cause undesired operation.